

Historical Precedent and Inspiration for Poultney's Main Street:



The following is a series of historical archive photographs generously provided by the Poultney Historical Society. These photographs provide a historical precedent and inspiration for the Main Street Improvement Project.

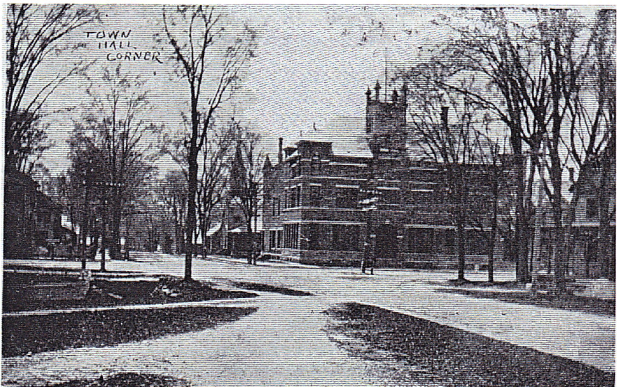
Trolley crossing at Main and Depot Street



Although the grandeur of those spectacular and majestic elm trees cannot be reproduced, the intent of the streetscape enhancement project is to re-establish a grand allee of trees while creating new opportunities for economic development.



View of Main Street during parade shows the historic village streetscape and well-defined sidewalks, store frontages and pedestrian activity that was commensurate with the town's commercial success as the center of the slate industry.



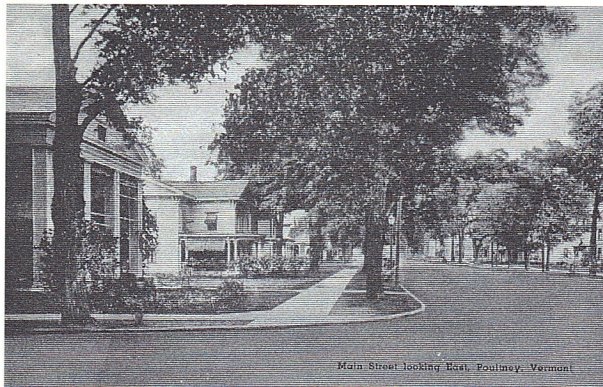
The corner of Main Street and RT 30 used to be graced with a handsome town office building. The building was lost in the 1960's when the town fathers decided it was too expensive to maintain.



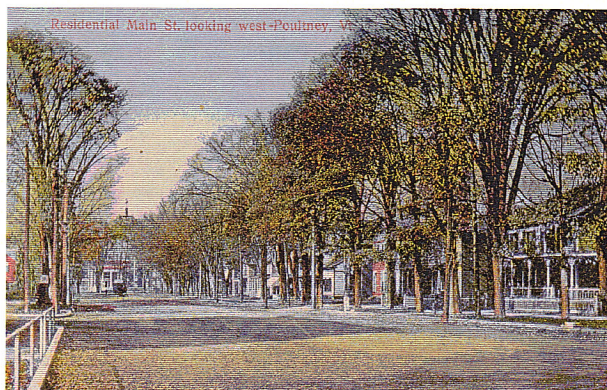
One of the unique aspects of Poultney's streetscape is the wide sidewalks that separate the street from the storefronts. While partially created by the wide tree lawns along Main Street, the commercial storefronts also met the sidewalks such that porches, awnings, and other appurtenances defined a vibrant pedestrian streetscape.



The role of the Railroad was dramatic for Poultney, but all that remains is the old bed, and the former depot buildings. The presence of the rail line now a state rail trail is an untapped opportunity.



Dramatic, pristine, beautiful are just a few words that describe the historic ambience of Poultney's Main Street.



While many Vermont Main Streets were lined with elms, few actually combined extensive street treescapes with commercial downtowns.