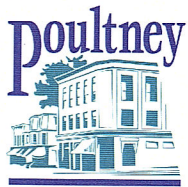




Final Report:

Main Street and Downtown Improvements for Poultney, Vermont

Project funded by the:
VT Department of Development and Community Affairs
Municipal Planning Grant Program



Prepared for:
The Village of Poultney
and the
Poultney Downtown Redevelopment Committee

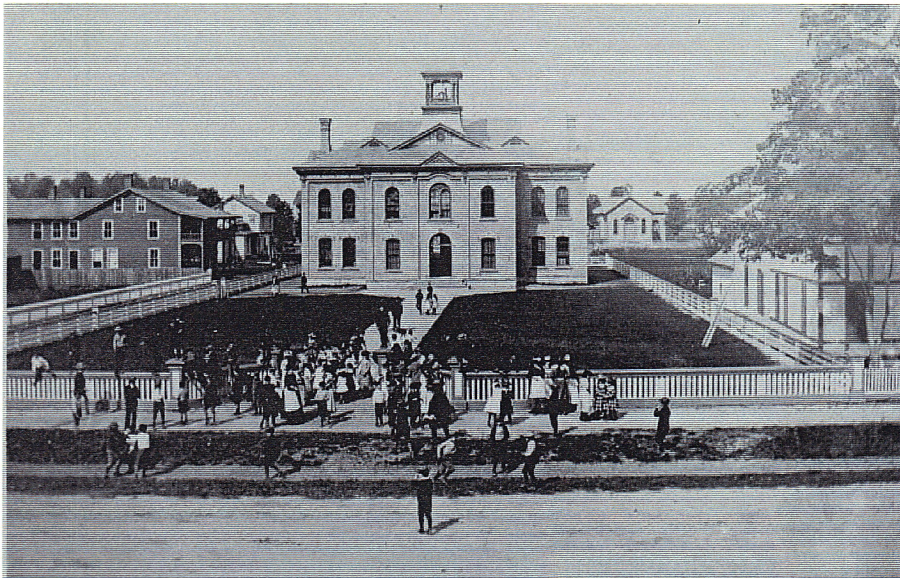
Prepared by:



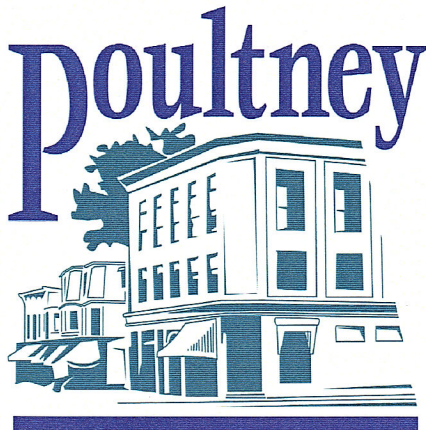
Guertin - Elkerton Associates and
Engineers and Planners
Shaftsbury, VT and Stoneham, MA

The Office of Robert A. White, ASLA
Landscape Architects and Planners
Norwich, VT

April, 2002

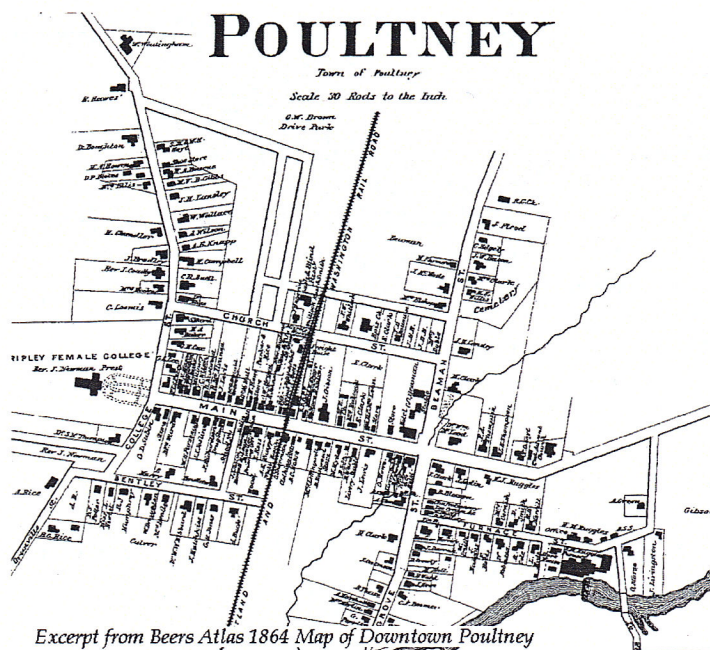


For additional information or copies of this report, please contact



Poultney Downtown Redevelopment Committee
Ms. Mary Jeanne Packer, Downtown Revitalization Coordinator
Ghostwriters, Inc.
PO Box 196
212 Main Street, Suite 1
Poultney, Vermont 05764
(802) 287-4284

Village of Poultney
Mr. Jonas Rosenthal, Town Manager
Main Street Poultney, Vermont 05764



Contents:

Chapter	page
1. Introduction	1
<ul style="list-style-type: none"> • Background • Historical Precedents and Inspirations • Community Participation and Guidance • Analysis of Existing Conditions 	
2. Streetscape Plans	20
<ul style="list-style-type: none"> • Lower Main Street from College Street to Maple Street • Central Main Street from Maple Street to the Old Schoolhouse Crossing • Depot Park and Rail Trail Intersection • Depot Street and Shaws • Upper Main Street from Old Schoolhouse Crossing to Route 30 • Route 30 North/South 	
3. Improvement Costs and Implementation Strategies	44
4. Appendices:	43